

Audi A5 Sportback



Technical Data	
	Audi A5 Sportback 2.0 TFSI
Engine	
Propellant	Petrol
Type	4-cylinder SI engine 2.0 l
Engine capacity	1984
Max. output kW (PS)	140 (190)
Max. torque (Nm)	320
Transmission	
Gearbox	7-speed S tronic
Drivetrain	Front Wheel Drive
Performance	
Acceleration 0-100 km/h	7.5
Top Speed (km/h)	241
Fuel consumption, urban/ extra-urban/ combined in l/100km	7.7/ 5.1/ 5.9
Steering	Electromechanical power steering
Suspension	Standard suspension
Brakes	
Front	Disc brakes in front
Rear	Disc brakes in rear
Measurements	
Wheelbase (mm)	2824
Length (mm)	4757
Height (mm)	1386
Width (without mirrors/ mirrors unfolded) (mm)	1843/ 2029
Track (front/rear) (mm)	1587/ 1568
Unladen weight (kg)	1490
Turning circle (mm)	11700
Luggage volume (litres)	465
Fuel tank (litres)	54

Price Rp. 1,269,000,000,- off the road		
Standard/ Optional Equipment		
	Standard	Optional
Safety		
Space-saving spare wheel	●	
Tool kit and jack	●	
First aid kit	●	
First aid kit with warning triangle and safety vests		○
ISOFIX child seat anchors and top tether for the rear seats	●	
Manual child safety lock	●	
ISOFIX child seat anchors for front passenger seat		+
Power-operated child safety lock		
Full-size airbags with front passenger airbag deactivation		
Side airbags in front and curtain airbag system	●	
Electronic immobilizer	●	
Tire pressure monitoring system	●	
Start/stop system	●	
Seat belt reminder	●	
Technology & Assistant Systems		
Audi drive select	●	
Audi virtual cockpit Plus		○
Cruise control system with speed limiter	●	
Hold assist	●	
Parking aid plus		○
Park Assist package (360 camera + Park Assist with Parking Aid plus)		○
Rear view camera system		○
Head-up display		○
Exterior		
S line bumpers	●	
Heat-insulating glass	●	
High-Gloss Styling package	●	
Exterior mirrors, power-adjustable, heated and power-folding, auto-dimming on both sides, with memory feature	●	
Headlamp washer system		○
Headlamps	●	
LED rear combination lamps	●	
Matrix LED headlamps with dynamic turn signal		+
LED rear combination lamps with dynamic turn signal		
Matrix LED headlamps with Audi laser light, dynamic lighting scheme and dynamic turn signal		+
LED rear combination lamps with dynamic turn signal		
Headlamp washer system		
Separate daytime running light	●	
Accent surfaces painted in Matte Black	●	
Scuff plates with aluminum inserts in front, illuminated, with "S" logo	●	
Panoramic glass sunroof		○
Comfort		
Standard suspension system	●	
Sports suspension		○
Suspension system with damper control		○

Power front seats with memory feature for the driver seat	●	
4-way lumbar support for the front seats	●	
Windshield with acoustic glass	●	
Comfort center armrest in front	●	
Cigarette lighter and ashtray	●	
Comfort key with sensor-controlled luggage compartment release		○
Interior		
Leather-wrapped multi-function steering wheel, 3-spoke	●	
Leather-wrapped steering wheel, 3-spoke, with multi-function Plus		○
Leather-wrapped steering wheel, 3-spoke, with multi-function Plus and steering wheel heating		○
Sports contour leather-wrapped steering wheel w/ multi-function Plus, 3-spoke, flat-bottomed		○
Auto-dimming interior rearview mirror, frameless	●	
Decorative inserts in Silver Aluminum Ellipse	●	
Decorative inserts in Black Piano Lacquer, Audi exclusive		○
Decorative inserts in Brown Burr Walnut		○
Decorative inserts in Gray Natural Oak		○
Sun visor on driver and front passenger side	●	
Automatic air conditioning system	●	
3-zone climate control system		○
Leather/leatherette "mono.pur 550" combination	●	
Standard seats in front	●	
Sports seats in front		○
Emblems		+
Headliner in black fabric		
Accent surfaces painted in Glossy Black		
Sport seats in front		
Pedals and foot rest in stainless steel		
Scuff plates with aluminum inserts in front, illuminated, with "S" logo		
Fine Nappa leather with embossed "S"		
Entertainment & Communication		
Audi sound system	●	
Bang & Olufsen Premium Sound System with 3D sound		○
Bluetooth interface	●	
Ambient Lighting package (1 color)	●	
Ambient Lighting package plus (30 colors)		○
Audi smartphone interface		○
MMI Navigation plus with MMI touch		○
Wheels		
Forged alloy wheels, 15-spoke style, 7.5J x 17 with 225/50 R17 tires	●	
Alloy wheels, 5-double-spoke star style, 8.5J x 18, 245/40 R18 tires		○
Alloy wheels, 5-parallel-spoke style, 8.5J x 19, 255/35 R19 tires		○
Cast aluminum wheels-19 inch - in multi-spoke design, contrasting gray, partly polished		○
Audi Sport cast alloy wheels, 5-double- arm style, Matte Titanium Look, diamond-turned, 8.5J x 19 with 255/35 R19 tires		○
Audi Sport cast alloy wheels, 5-arm-pylon style, Matte Titanium Look, diamond-turn, 8.5J x 19, 255/35 R19 tires		○
Audi Sport cast alloy wheels,10-spoke-V style,8.5Jx19 with 255/35 R19 tires		○
Audi Sport cast alloy wheels, 10-spoke star style, Platinum Look, diamond-turned, 8.5Jx19 with 255/35 R19 tires		○

- Optional
- + Package

Exterior Color

Solid

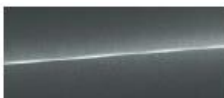


Turbo Blue



Ibis White

Pearl effect



Daytona Gray

Metallic



Tango Red



Mythos Black

Interior Color



Black



Okapi Brown

Optional Features



Alloy wheels, 5-double-spoke star style
8.5J x 18, 245/40 R18 tires



Audi Sport cast alloy wheels
10-spoke V-style
8.5J x 19, 255/35 R19 tires



Audi Sport cast alloy wheels,
5-double-arm style, Matte Titanium
Look, diamond-turned,
8.5J x 19, 255/35 R19 tires



Alloy wheels, 5-parallel-spoke style
8.5J x 19, 255/35 R19 tires



Cast aluminum wheels
19 inch, in multi-spoke design,
contrasting gray
8.5J x 19, 255/35 R19 tires



Audi Sport cast alloy wheels,
5-arm pylon style, Matte
Titanium Look, diamond- turned,
8.5J x 19, 255/35 R19 tires



Audi Sport cast alloy wheels,
10-spoke star style, Platinum
Look, diamond- turned, 8.5J x 19
255/35 R19 tires



Cast aluminum wheels, 5-spoke
Cavo (S design), contrasting gray
8.5J x 19, 255/35 R19 tires